



Executive Sporty Lace-up Brown Leather Safety Shoes

SKU: FS61

Key Features

Has a steel toe made from carbon steel that protects the user's feet from impacts

Has extra corrosion resistance eyelets

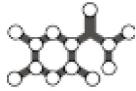
Lightweight shoes which are highly durable and have ultimate shock absorption

The breathable drylex lining, 3D fabric being used as a quarter lining in the shoes prevents moisture and perspiration, and provides high sweat absorption property for a dry feel

It is also highly resistant to abrasion



Anti-static



Anti-bacterial Property



Oil and Fuel Resistant



Certification:

EN ISO 20345:2011, IS 15298(Part-02):2016, DGMS

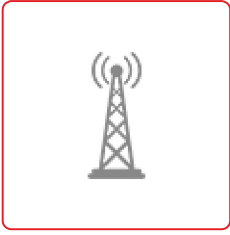


Description

- KARAM offers a wide range of shoes having double density PU/PU soles which are injection moulded onto the shoe.
- These double density PU/PU outsoles provide ultimate shock absorption and durability, while remaining light in weight and flexible. This safety shoe is a smart elegant executive shoe for complete foot safety.

Warranty: 9 months from the date of invoice against any manufacturing defects.

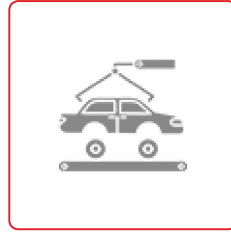
Ideal for use



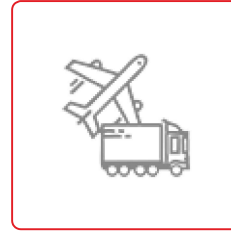
Telecom



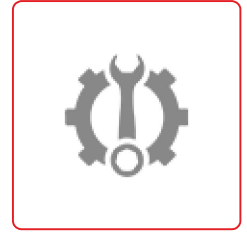
Pharmaceutical



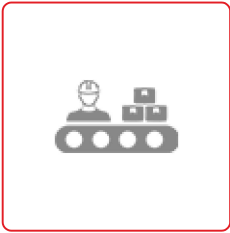
Automotive



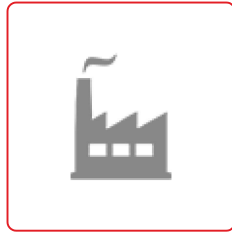
Logistics and
Transportation



Maintenance



Manufacturing



General
Industry

Product Specifications

[Download Specifications](#)

Upper	Buff brown grain leather
Lining	Special breathable drylex lining, 3D fabric
Vamp Lining	Comfortable, breathable soft fleece lining
In-sock	Anti-fatigue molded EVA/PU in-socks
Toe	Steel
Sole	Double density PU/ PU sole
Outsole	Cleated outsole with wider cleats
Protection Level	S1
Category	Design A
Size	3-13