



Executive Choice Slip-on Leather Safety Shoes

SKU: FS04

Key Features

Has a steel toe made from carbon steel that protects the user's feet from impacts

Outsole offers high level of energy absorption

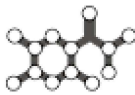
Comes with excellent grip, comfort and slip resistance



Slip Resistant
Tread Pattern



Anti-static



Anti-bacterial
Property

Certification:

EN ISO 20345:2011, IS 15298 (Part-02):2016



Description

- KARAM offers a wide range of shoes having single density PU sole which are injection moulded onto the shoe.
- Single density PU outsole imparts high level of energy absorption. New executive choice slip-on safety shoe for the smart executive on the move.

Warranty: 9 months from the date of invoice against any manufacturing defects.

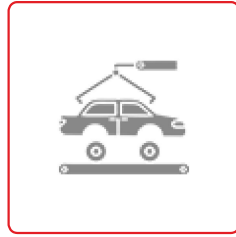
Ideal for use



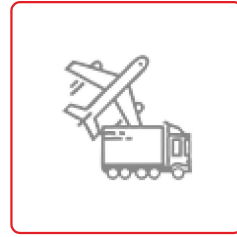
Telecom



Pharmaceutical



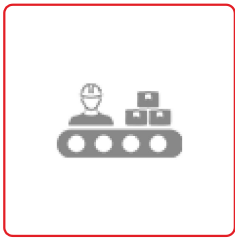
Automotive



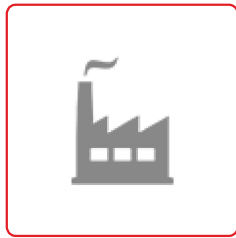
Logistics and
Transportation



Maintenance



Manufacturing



General
Industry

Product Specifications

[Download Specifications](#)

Upper	Full grain leather
Lining	Netlon padded with foam
Vamp Lining	Highly abrasion resistant non-woven fabric lining
In-sock	5mm Anti-fatigue molded EVA/PU in-socks laminated with netlon
Toe	Steel
Sole	Single density PU sole
Outsole	Cleated outsole with wider cleats
Protection Level	S1
Category	Design A
Size	3-13